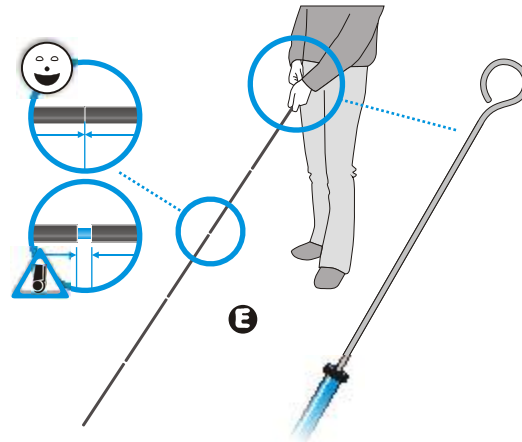
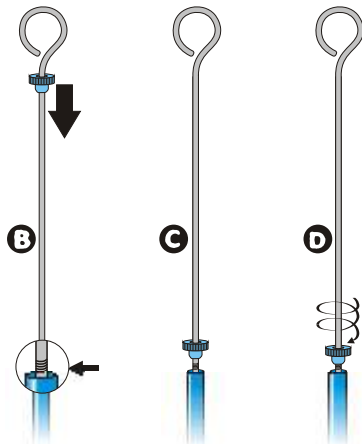
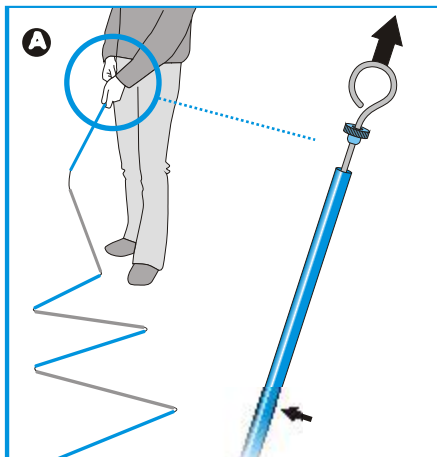
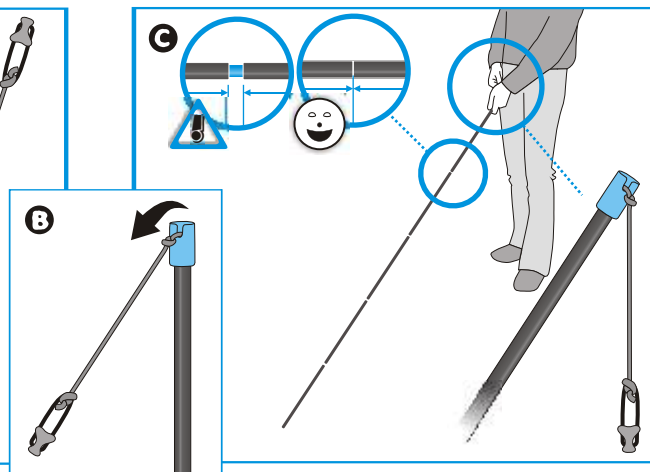
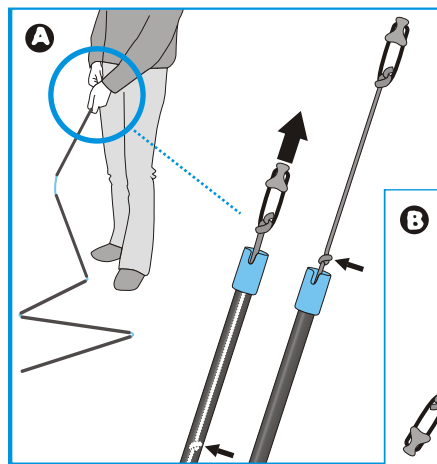


REF. 1012



REF. 1281



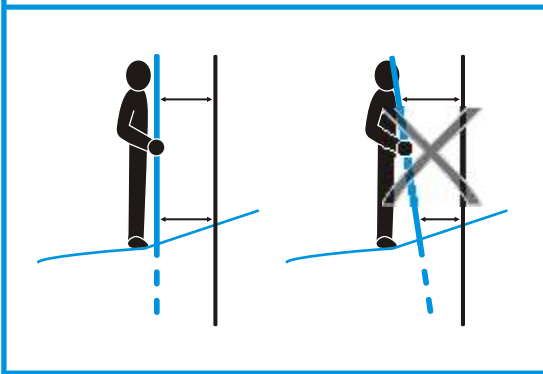
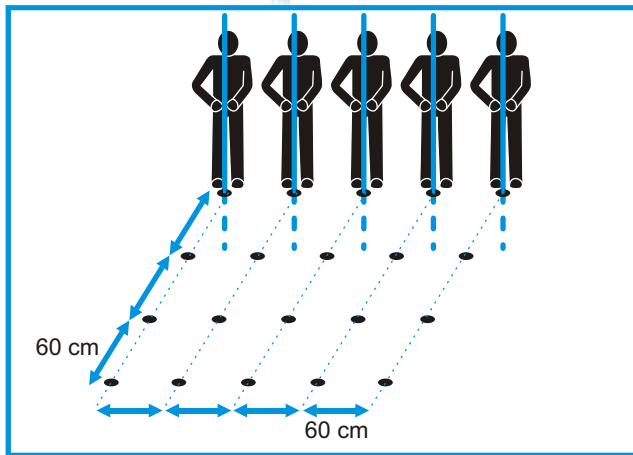
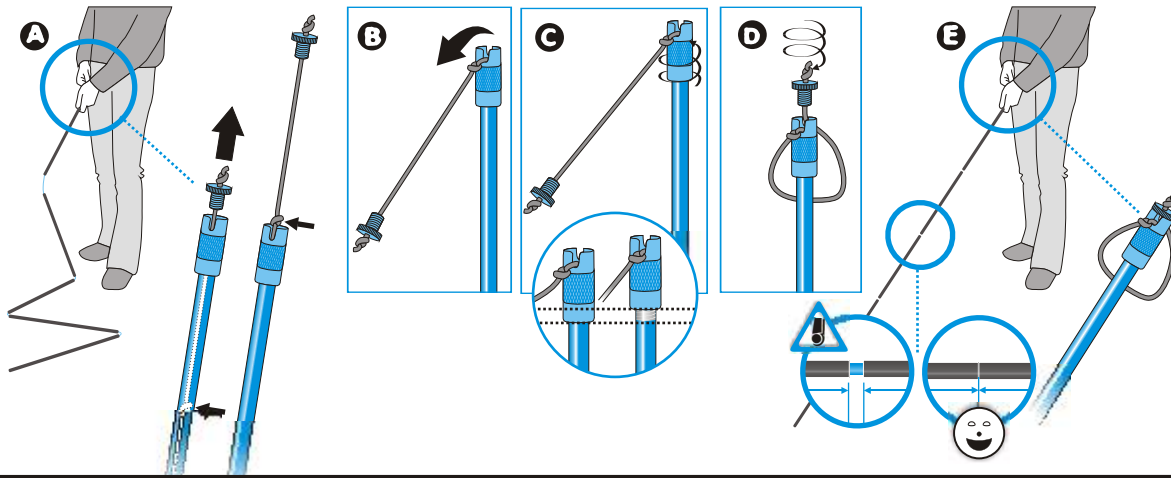
Ref.	Model	cm	g
1281	Sonda da valanga in carbonio	240	123
1005	Sonda alluminio con cordino	200	223
1009	Sonda da valanga alluminio con cavetto	240	263
1012	Sonda da valanga alluminio con cavetto	280	372

**CAMP** SPA  
**CO**STRUZIONE **ART**ICOLI **M**ONTAGNA **P**REMANA

VIA ROMA, 23 - 23834 PREMANA (LC) - ITALY  
 TEL. +39 0341 890117 FAX. +39 0341 818010

<http://www.camp.it> - e-mail: [contact@camp.it](mailto:contact@camp.it)

REF. 1005 - 1009



**CAMP**

SONDE DA VALANGA  
AVALANCHE PROBES  
SONDES A AVALANCHE  
LAWINENSONDEN  
SONDAS A AVALANCHA

May 2006 - Rev. 0 - © CAMP S.p.A.

GARANZIA 3 ANNI  
3 YEAR GUARANTEE  
GARANTIE 3 ANS  
GARANTIE 3 JAHRE  
GARANTIA 3 AÑOS



[www.camp.it](http://www.camp.it)  
e-mail: [contact@camp.it](mailto:contact@camp.it)

MADE IN KOREA